

# 22 y/o WM with KCN Corneal Reshaping Plus CXL OS

Preop:

- VA sc: **20/200-**
- MR: -3.00 + 4.00 X 009=**20/30-2**

Day 1 S/P Postop:

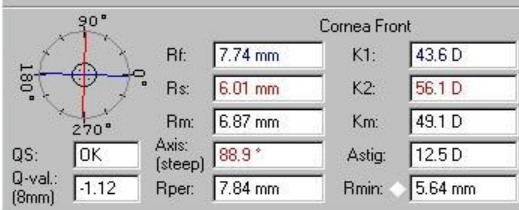
- VA sc: **20/30-2**
- MR: -0.75 + 0.75 X 095=**20/30-1**

# Postop Day 1

Name: NM93986 Date of Birth: [ ]

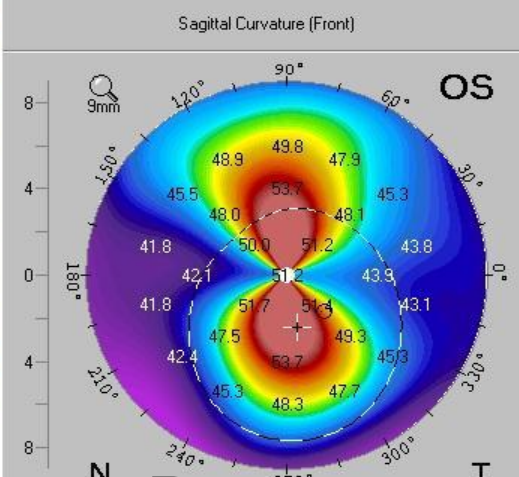
Exam

A: 11/15/2012 09:46:59 Left ( ) D-Scan HR

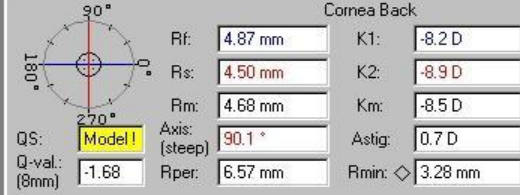
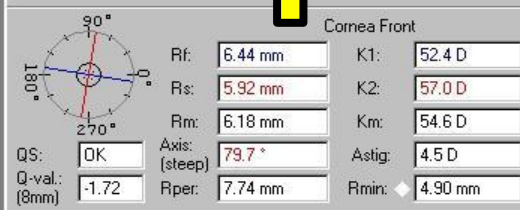


Pupil Center:	+ 484 μm	x(mm)	+0.22	y(mm)	-1.20
Pachy Apex:	● 500 μm	x(mm)	0.00	y(mm)	0.00
Thinnest Locat.:	○ 467 μm	x(mm)	+0.84	y(mm)	-0.84
K Max. (Front):	◆ 59.9 D	x(mm)	0.00	y(mm)	-0.08

Cornea Volume:	64.1 mm <sup>3</sup>	KPD:	+2.3 D
Chamber Volume:	143 mm <sup>3</sup>	Angle:	46.8°
A. C. Depth (Ext.):	3.31 mm	Pupil Dia:	5.07 mm
IOP(cor):		Lens Th.:	

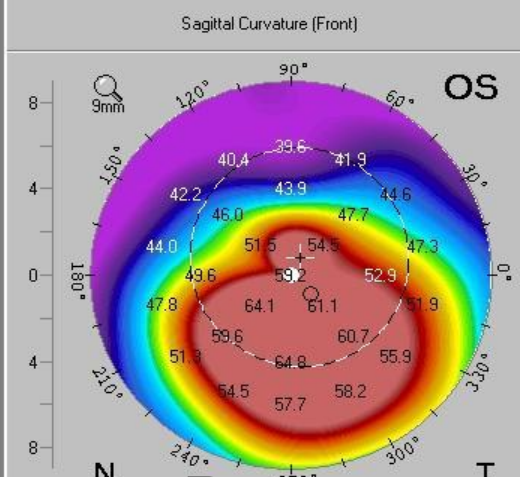


## Postop



Pupil Center:	+ 450 μm	x(mm)	+0.19	y(mm)	+0.41
Pachy Apex:	● 434 μm	x(mm)	0.00	y(mm)	0.00
Thinnest Locat.:	○ 418 μm	x(mm)	+0.45	y(mm)	-0.45
K Max. (Front):	◆ 68.9 D	x(mm)	-0.15	y(mm)	-0.90

Cornea Volume:	59.6 mm <sup>3</sup>	KPD:	+3.3 D
Chamber Volume:	152 mm <sup>3</sup>	Angle:	32.2°
A. C. Depth (Ext.):	3.37 mm	Pupil Dia:	4.98 mm
IOP(cor):		Lens Th.:	



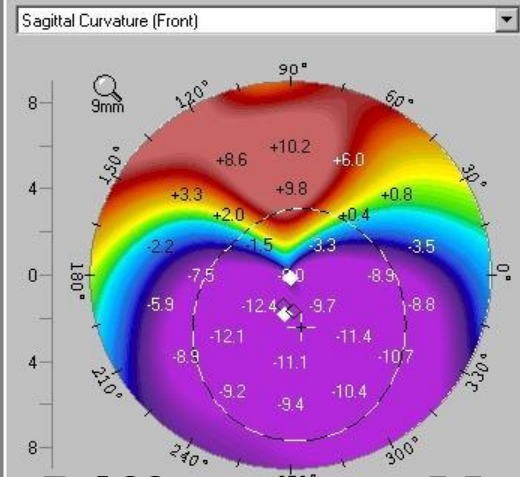
## Preop

Difference A - B



Pupil Center:	+ 34 μm	x(mm)	+0.03	y(mm)	-1.60
Pachy Apex:	● +66 μm	x(mm)	0.00	y(mm)	0.00
Thinnest Locat.:	○ +48 μm	x(mm)	+0.39	y(mm)	-0.39
K Max. (Front):	◆ -9.0 D	x(mm)	+0.15	y(mm)	+0.83

Cornea Volume:	+4.6 mm <sup>3</sup>	KPD:	-1.0 D
Chamber Volume:	-8 mm <sup>3</sup>	Angle:	+14.6°
A. C. Depth (Ext.):	-0.06 mm	Pupil Dia:	+0.08 mm
IOP(cor):		Lens Th.:	



## Difference Map

